

Iron Mountain Communication Site

Overview

The site is located in San Bernardino County near several communication towers in the Iron Mountains, approximately 1 mile west of the Metropolitan Water District’s (MWD) Iron Mountain Pumping Plant, and approximately 9 miles north-northeast of the junction of State Route 62 and State Route 177. The proposed project will place a tower and equipment shelter at the site.

Table 1: Iron Mountain Communication Site

Latitude ¹	Longitude ¹	Elev ²	Address	T/R/S ³	APN ⁴	USGS Quadrangle
34°09’03.9”	115°08’27.1”	1,920	Iron Mountain Road, Earp, CA 92242	1N 17E Sec. 26	0643-221-07 (SB)	Iron Mtns.
1 – All coordinates utilize NAD83 datum 2 – All elevations in feet above mean sea level 3 – Township/Range/Section (San Bernardino Base Meridian)				4 – All Assessors Parcel Numbers are located in Riverside County, unless noted: OC = Orange County; SD = San Diego County; SB = San Bernardino County		

Surrounding Land Uses

The Iron Mountains are very isolated, and with the exception of the MWD facility and associated Colorado River Aqueduct, there is minimal human activity in the area. The MWD pumping plant is located approximately 1 mile east of the site at the base of the mountain, and houses the pumping plant, holding ponds, a small residential area, and the aqueduct itself. The project site is atop a mountain overlooking this MWD facility. Two MWD communication towers are positioned on a ridge approximately 900 feet northwest of the proposed tower site.

Topography and Vegetation

The project site is located atop a mountain peak in the eastern portion of the Iron Mountains, and overlooks Ward Valley to the northeast, east, and southeast. The Old Woman Mountains lie across Ward Valley to the north, and the Granite Mountains are visible across the valley to the south. The site itself is a graded pad atop a ridge, and is largely void of vegetation. Vegetation on the surrounding areas of the mountain is sparse, and is composed of brittlebush, burro-weed, creosote bush, and ephedra.

Land Ownership and Applicable Habitat/Land Management Plan

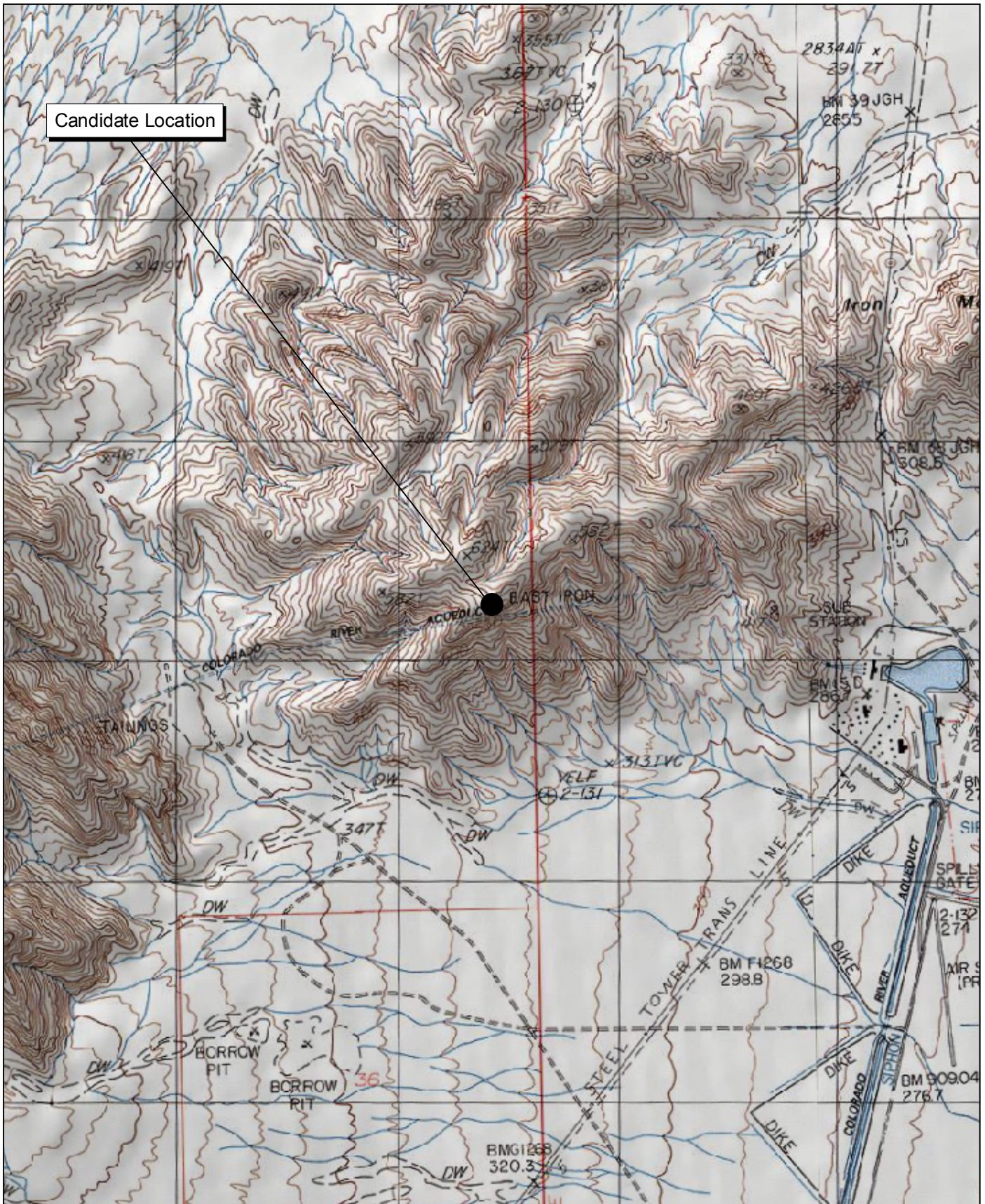
The site is located in San Bernardino County and is located on lands that are owned and operated by the MWD. It is not located within the boundaries of any regional resource management plan, such as a habitat conservation plan.

Road Access

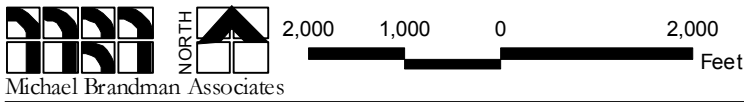
A dirt road accesses the site from the MWD facility at the base of the mountain.

Commercial Power Access

Commercial power is located at the nearby MWD towers, approximately 900 feet to the northwest of the site. Power will be brought in via a pole line from the MWD tower sites along the access road.



Source: USGS Iron Mountains 7.5' Topographic Map.



Iron Mountain Communication Site Local Vicinity Topographic Map

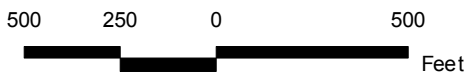


Source: San Bernardino County NAIP, 2005.



Michael Brandman Associates

27490003 • 02/2008 | iron_mountain_aerial.mxd



Iron Mountain Communication Site Local Vicinity Aerial Map

COUNTY OF RIVERSIDE
PUBLIC SAFETY ENTERPRISE COMMUNICATION PROJECT



Photograph 1: View toward Iron Mountain candidate location, facing east.



Photograph 2: View toward Iron Mountain candidate location, facing west.



Photograph 3: View toward Iron Mountain candidate location, facing east-northeast.



Photograph 4: View toward Iron Mountain candidate location from an adjacent ridge, facing southeast.

Source: Michael Brandman Associates, 2008.



Michael Brandman Associates

27490003 • 02/2008 | Iron Mountain_Photo1.doc

Iron Mountain Candidate Photographs 1 to 4
PSEC Project



Photograph 5: View from Iron Mountain candidate location, facing east.



Photograph 6: View from Iron Mountain candidate location, facing south.



Photograph 7: View from Iron Mountain candidate location, facing southwest.



Photograph 8: View from Iron Mountain candidate location, facing northwest.

Source: Michael Brandman Associates, 2008.



Michael Brandman Associates

27490003 • 02/2008 | Iron Mountain_Photo2.doc

Iron Mountain Candidate Photographs 5 to 8 PSEC Project